



**Integration
Performance
Installation Guide**

Universal

IP-UNI82

Dear Customer,

Thank you for choosing Morel for your car audio speaker solution.

Morel prides itself on engineering and producing the best high-fidelity speaker systems.

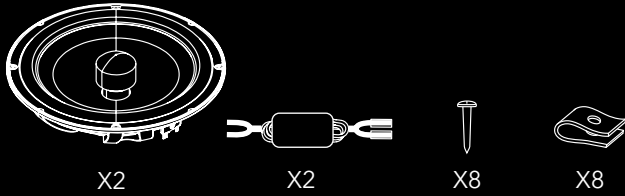
We hope you enjoy your Integration Performance sound system for years to come.

If you have any questions, please contact your Morel dealer or Morel support at:

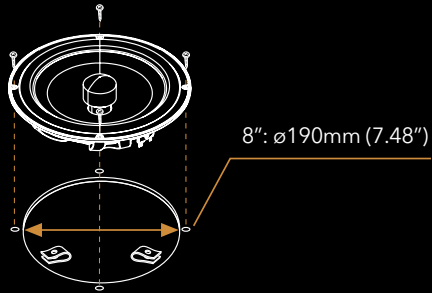
www.morelhifi.com

Components and Mounting

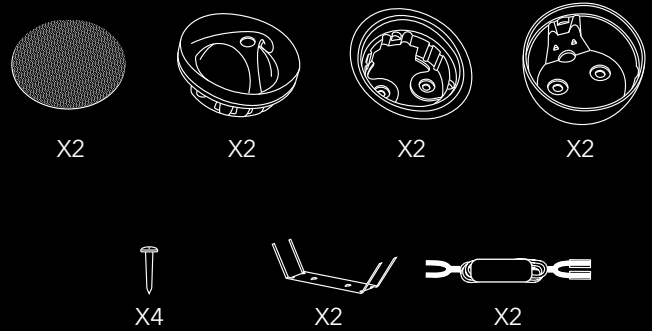
Woofers



Woofers mounting

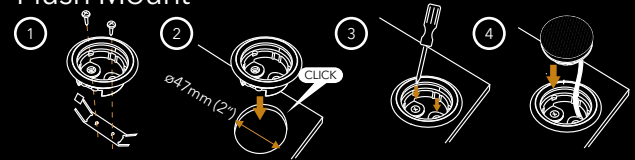


Tweeter

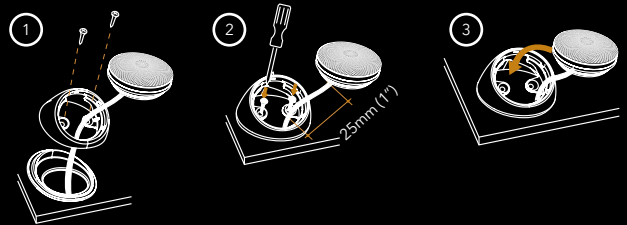


Tweeter

Flush Mount

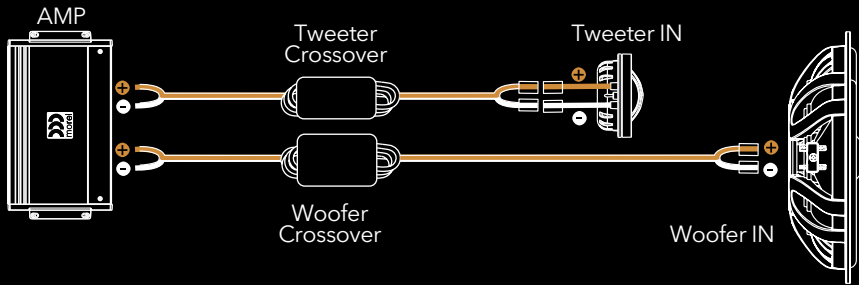


Surface Mount

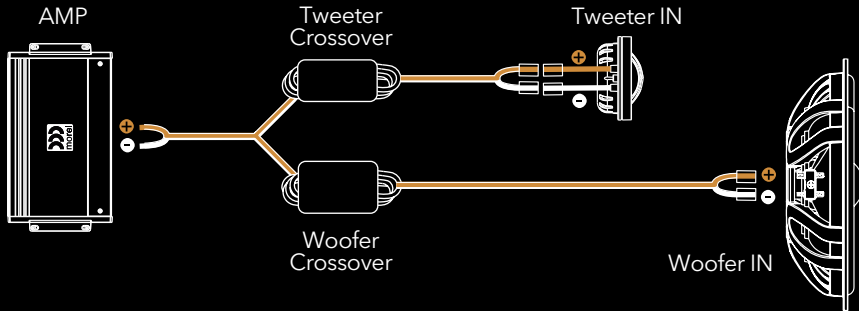


Connections

4-Ch Amplifier



2-Ch Amplifier



Specifications

WOOFER	
Nominal Impedance (ohm)	4
Power Handling Wrms	100
Max. Trans. Pwr Handling Wrms	300
Sensitivity (2.83 V/1M) dB	92
Frequency response Hz	40-20,000
Resonant Freq. Fs Hz	56
Voice Coil Diameter mm (inch)	25 (1)
DC Resistance (ohm)	2.8
Magnet System	Neodymium double magnet
HE-Magnetic Gap Height mm (inch)	4 (0.16)
B-Flux Density (T)	1.29
BL Product/BXL	4.9
Suspension Compliance CMS - mm/N	0.36
Electrical Q Factor QES	0.36
QTS	0.8
QMS	4.49
Mech. Resistance RMS- N • S / M	1.74
Moving Mass MMS - gr/ounce	22(0.77)
Equiv. Can Air Load VAS - L (cu.ft*)	28(736.38)
Effective Piston Area SD sq.cm (sq.inch)	227(35.18)
Cone Material	DPC
Unit Diameter mm(inch)	210 (8.26)
Net Weight Kg (lb)	0.5 (1.1)

* Morel operates a policy of continuous products design improvement, consequently specifications are subject to alteration without prior notice

TWEETERS	
Nominal Impedance (ohm)	4
Power Handling Wrms	90
Max. Trans. Pwr Handling Wrms (10ms)	2000
Sensitivity (2.83 V/1M) dB	91.5
Frequency Response Hz	1600-20000
FS Hz	900
Voice Coil Diameter mm (inch)	25 (1)
Voice Coil Wire	Copper
Magnet System	Neodymium
Mounting Depth mm (inch)	20 (0.8)

CROSSOVERS	TWEETER
Crossover Point	2700Hz/12dB First order

Wishing you many years of sound enjoyment!



Morel, Ness Ziona, 70400 Israel.
 Tel: +972-8-9301161
 Fax: +972-8-9301312
 E-mail: info@morelhifi.com

Morel America, Chandler, AZ, USA
 Toll free number: 1-877-667-3511
 Fax: 1-718-721-1560
 E-mail: info@morelamerica.com

www.morelhifi.com