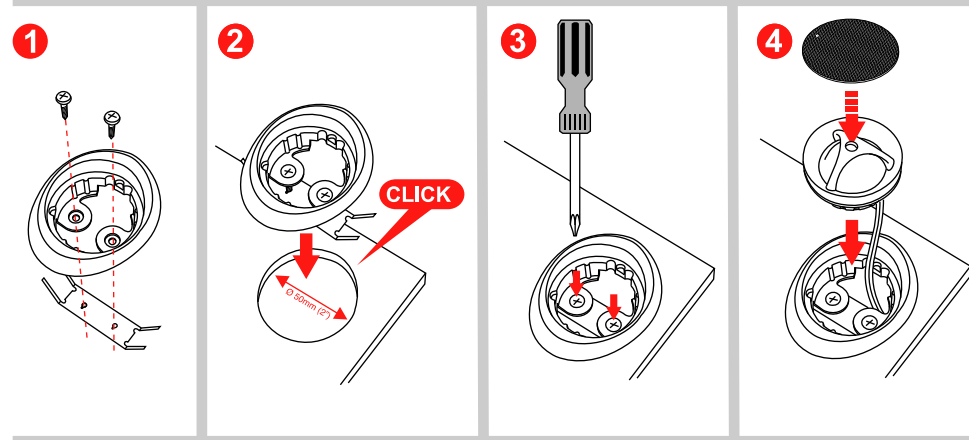
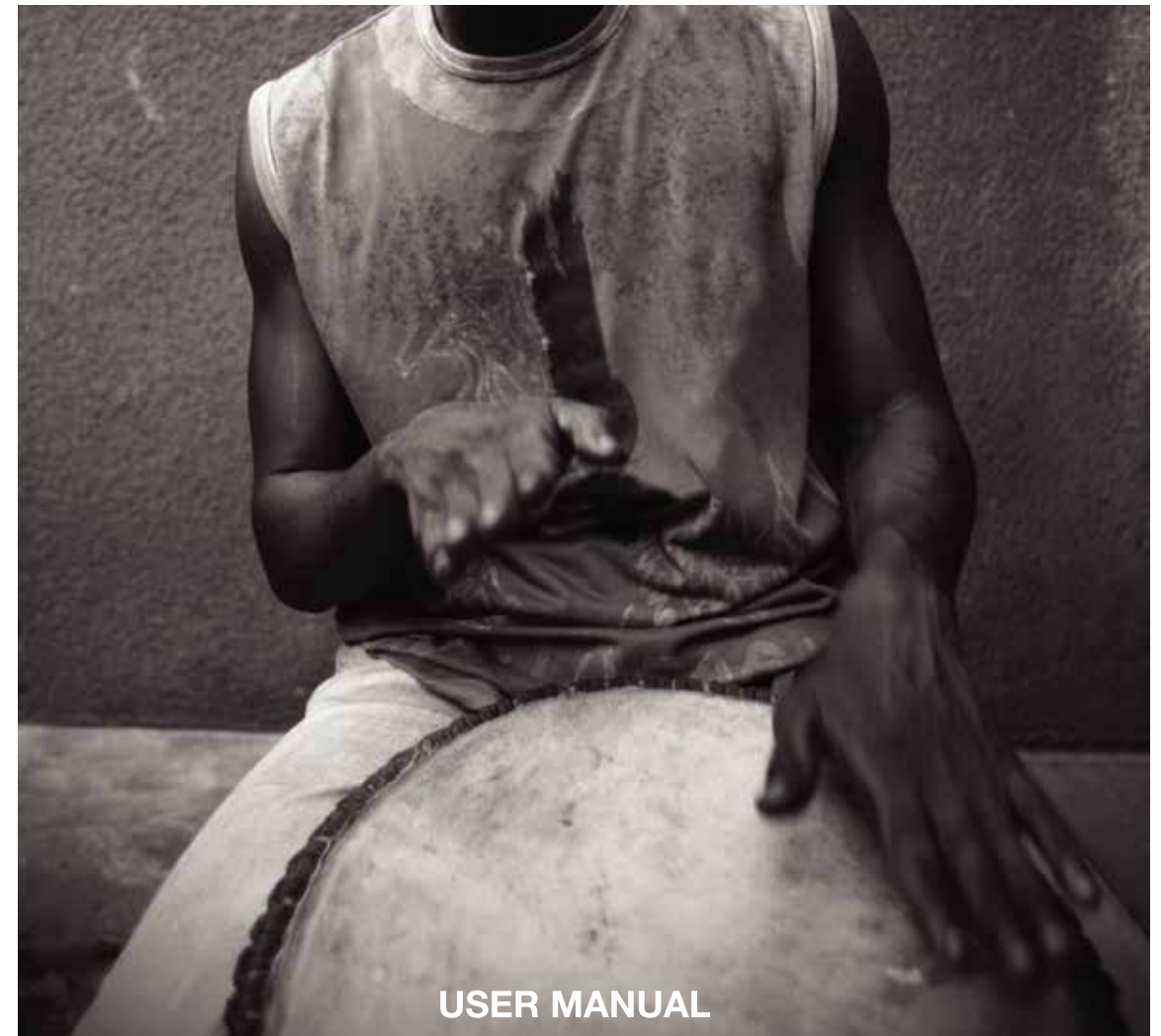
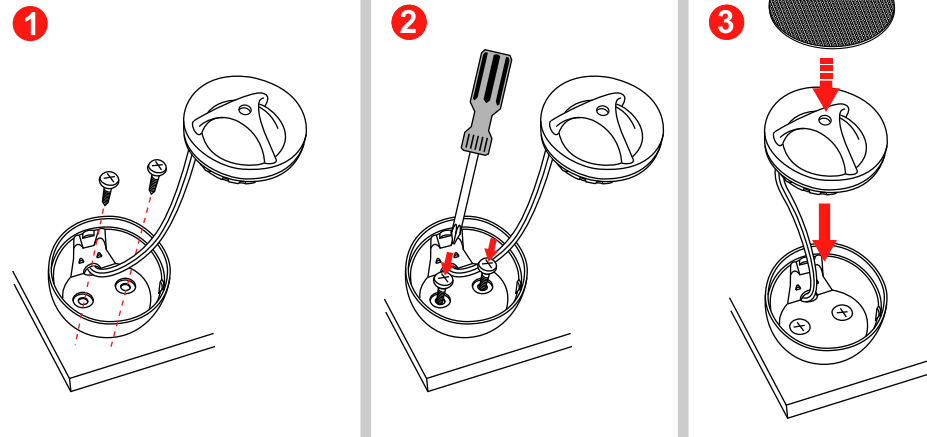


Flush mounting for 50 mm (1.96") cutout



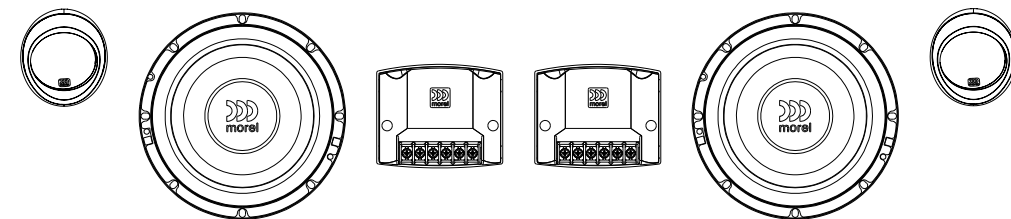
Surface mounting option 2



Specifications

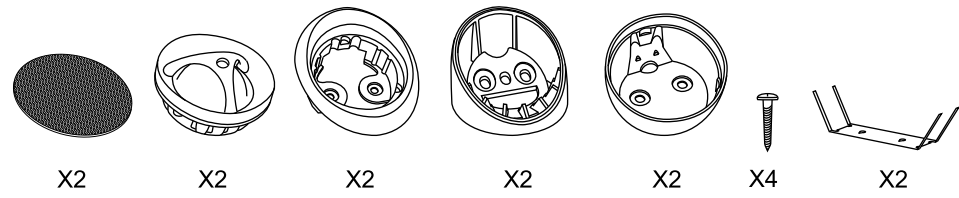
Two way system	Tempo 502	Tempo 602	Tempo 572	Tempo 692
Nominal Impedance	4 ohm	4 ohm	4 ohm	4 ohm
Power Handling	110W	130W	120W	150W
Max. Transient Power Handling	250W	250W	250W	280W
Sensitivity (2.83V/1M)	89db	90db	90db	91db
Frequency Response	65-22000	55-22000Hz	60-22000Hz	50-22000Hz
Voice Coil Diameter	Woofer: 38 mm (1.50") Tweeter: 28 mm (1.125")	Woofer: 38 mm (1.50") Tweeter: 28 mm (1.125")	Woofer: 38 mm (1.50") Tweeter: 28 mm (1.125")	Woofer: 38 mm (1.50") Tweeter: 28 mm (1.125")
Voice Coil Wire	Woofer: Copper Tweeter: Copper	Copper Copper	Copper Copper	Copper Copper
Magnet System	Woofer: high-grade ferrite Tweeter: Neodymium	high-grade ferrite Neodymium	high-grade ferrite Neodymium	high-grade ferrite Neodymium
Mounting Depth	Woofer: 57 mm (2.25") Tweeter: 20 mm (0.80)	64 mm (2.52") 20 mm (0.80)	62 mm (2.45") 20 mm (0.80)	85 mm (3.35") 20 mm (0.80)

TempoUltraMKII Component System

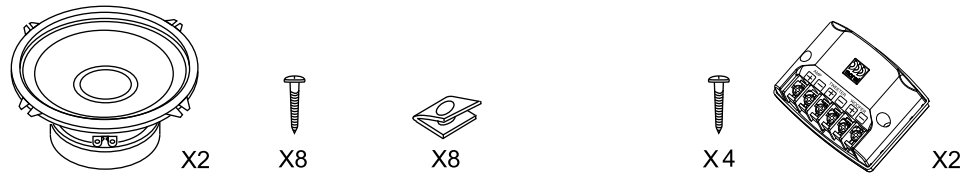


502 / 602 / 572 / 692 2 way

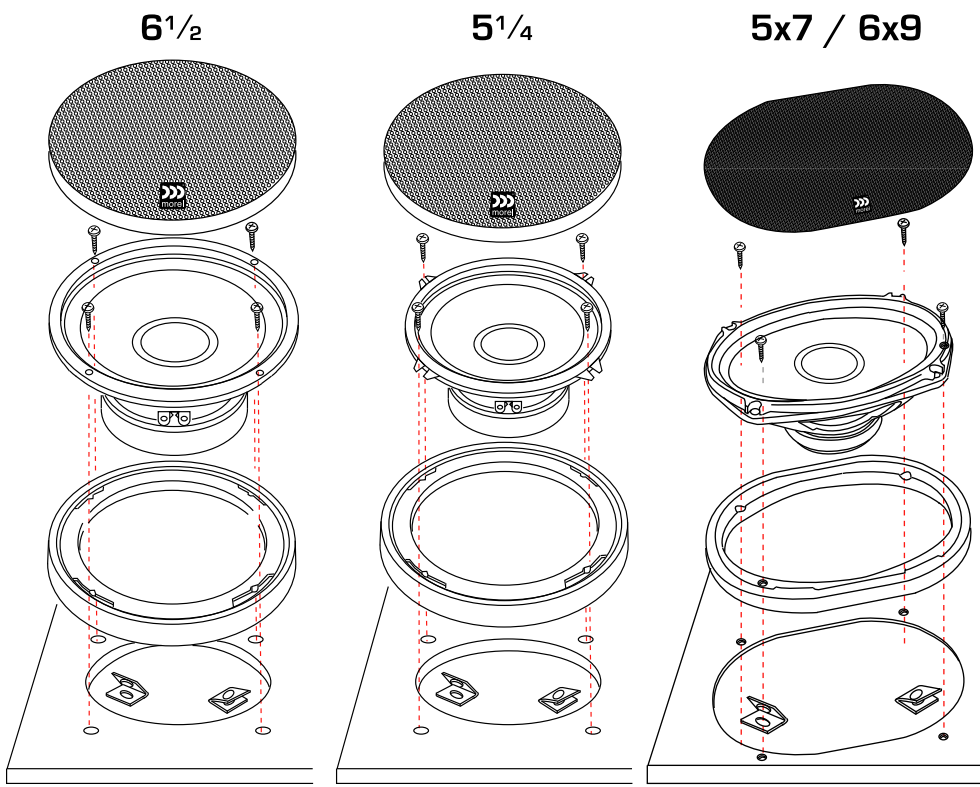
Content - Tweeter



Content - Woofer

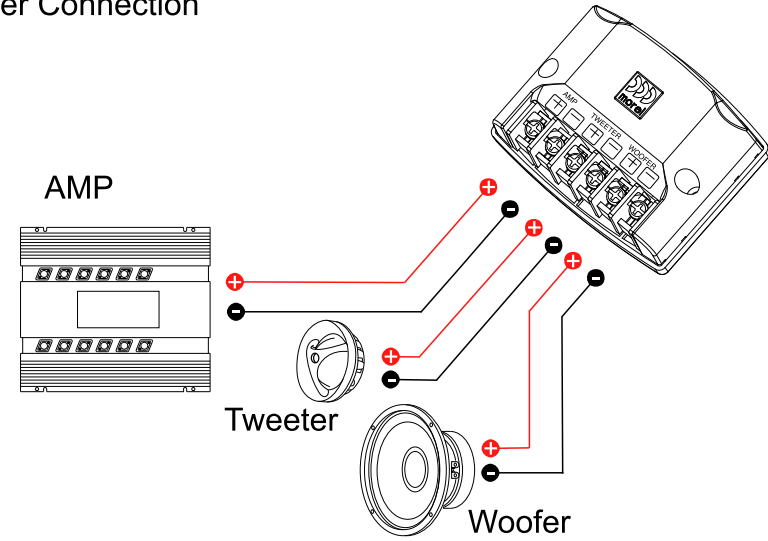


Woofer mounting



*Grills purchased separately

Crossover Connection



Surface mounting

